

# newsflash

HAUSMESSE  
2008

The EVI Audio Magazine



## E D I T O R I A L

Dear Business Partners and Friends of the Company,

it is with the greatest of pleasure that we welcome you to the EVI Audio Hausmesse 2008. What was once a very small-scale, intimate affair has today become, in its 21st edition, one of the most important gatherings in the global pro audio calendar. As in recent years, we are delighted to welcome more than 700 participants from more than 50 countries to Straubing.

We also look forward to many enjoyable conversations, making new contacts, and being able to show you—along with the many new products—our new production, demo, and test halls. The new complex not only satisfies the most modern standards as a manufacturing and development facility but is also an unambiguous statement about the future of Straubing as a manufacturing center, about the determination of Bosch to think long-term, and about its success-oriented corporate philosophy. For a foretaste of what to expect when you visit the new complex, see pages 4 to 7.

We wish you a successful stay in Straubing and look forward to sharing with you a prosperous future.



Konrad Proyer  
Plant Manager



Robert Hesse  
Vice President Sales EMEA

Cover: Andrea Bocelli in Lajatico

## I M P R I N T

PUBLISHER  
EVI Audio GmbH

COORDINATION  
Robert Pletz  
Hirschberger Ring 45  
D-94315 Straubing  
Tel: +49 9421/706-0  
Fax: +49 9421/706-315

REALIZATION  
snapshot Redaktionsbüro  
Gunther Matejka  
Tel: +49 89 / 75 50 56 80  
Fax: +49 89 / 75 50 56 829  
www.snapshot-redaktionsbuero.de

## EDITORIAL STAFF

Gunther Matejka  
James Edlund  
Guy Low  
Rhea Marstaller  
Daniel Kappla  
Pamela Böhm  
Uli Hoppert  
Andrea Bannert

## TRANSLATIONS

Ewan Whyte  
E-mail: Ewan.Whyte@wanadoo.fr

## GRAPHICS

Sabine Bitterlich  
E-Mail: s.bitterlich@web.de

## PRINTING

F&W Mediencenter, Kienberg  
www.fw-medien.de

## C O N T E N T S

- 3 MIX**  
News from the pro audio scene
- 4/5 INSIDE**  
Building work completed: The Straubing site
- 6/7 INSIDE**  
Interview with Konrad Proyer and Thomas Kroll:  
"A welcome indication that the future is secure"  
The new test hall at EVI Audio: Number One in Europe
- 8/9 HIGHLIGHTS: Electro-Voice**  
Andrea Bocelli in Lajatico: Gala of superlatives  
Show Hire, Milford: Betting on a winner
- 10/11 HIGHLIGHTS: Electro-Voice**  
Sx600PI in USA: Weatherproof performance  
EV SX600: Power and performance for high school football  
BRAVO/VIVA Festival Berlin: Mega event with TSE & EV  
Papa Roach & Co: Bad boys rock with EV
- 12/13 HIGHLIGHTS: DYNACORD**  
DYNACORD in Denmark: In the fast lane  
DYNACORD Cobra at Miami Metro Zoo: Cobra chameleon  
100 years of Oklahoma: Gala with the Cobra
- 14/15 HIGHLIGHTS: Midas/Klark Teknik**  
Aerosmith with the XL8: Rock this way with Midas!  
Ancienne Belgique: Leading Brussels venue banks on Midas  
Scottish cult band on tour with Midas: XL8 times two  
DN 9696 high-resolution hard disk recorder  
Klark Teknik purchases Supermac and Hypermac
- 16/17 INSTALLATION**  
Soccer's World Cup 2010 in South Africa:  
World Cup 2010: EVI Audio back on the ball;  
Pico Club, Alexandroupoli, Greece: Sirtaki with Cobra-power
- 18/19 80 YEARS OF ELECTRO-VOICE**  
80 Years of Electro-Voice: "The course has been set"  
Messages of congratulations
- 20/21 SPECIAL: DYNACORD**  
Tested and found to be 'excellent'  
A few cuttings from MI journals
- 22/23 INSIDE**  
New in team: Stephen Rodway, Gary Pace;  
TELEX/RTS at the IBC 2007: Star Award for KP-32CLD keypad  
Vatech Video & Audio: New TELEX distributor in the Lebanon  
MS Productions, Switzerland invests in EV XLC/XLD  
WFX Worship Facilities Expo: Westover Church wins by design  
Merchandising

## BREAKING THE SOUND BARRIER...

... with DYNACORD PowerH. For the spectacular "Blues on the Bay" air show in Hawaii, production company Custom Audio Hawaii deployed the new top-of-the-line amplifier from DYNACORD. "I've heard most of the high-end amps," explained Custom's Jeff Kang, "and nothing else comes close in combining compact size, power, and audio performance."



## MEGA SPECTACLE...

... with the reunited Led Zeppelin on the 10th December in London's O2-Arena. Twenty million fans, we are told, requested tickets for the first live show by the rock legends in 19 years. Key roles in the comeback of the year were played by a Midas XL8 Live Performance System, "Big" Mick Hughes (band sound), and Roy Williams (vocals mix).



## FOO FIGHTERS ...

... and Britannia Row once again proved to be an excellent team during the group's UK tour in November. As with most major productions by the renowned rental company, the final link in the audio chain was an Electro-Voice X-Line—as is the case on The Verve's current tour, more of which in the next issue of newsflash.



## UNDERWATER EXPLORATION...

... with RTS systems. Communication between the nuclear-powered research submarine, the supply ship, and the scientists on shore was provided by a digital matrix intercom system from RTS via satellite. The objective of the spectacular expedition by the National Oceanic & Atmospheric Administration



and the Institute for Exploration was a better understanding of the fauna and flora of the Gulf of Mexico.

## BOLLYWOOD LIVE ...

...with film score supremos Shankar Mahadevan, Ehsaan Noorani, Loy Mendonsa...and an EV XLC. This musical trio's star continues to rise in the world of mainstream pop music, thanks to their chart-topping fusion of Indian classical styles with western pop, musical virtuosity, and a stunning live show. Shankar Ehsaan Loy brought their "Cheers India" tour to the Hitec Grounds in Hyderabad on October 13th. A Midas Legend 3000, various Klark Teknik processors, 18x EV XLC 127+ array elements, and 24x EV Xsubs made sure the 10,000 fans caught every note.



## THE COBRA...

... is king in Norway. In the summer 2007, the team from MultiTech AS produced inter alia three major festivals. Regardless of whether the programme featured classical music, jazz, rock, or traditional folk, the sound crew opted for the same line array every time: a Cobra-4. The monitors and amps also sported the DYNACORD badge.



INSIDE

THE STRAUBING SITE

# NEW PRODUCTION AND TEST STANDARDS

In September, the new construction work at the Straubing works was largely concluded. Extending over 6,000 square meters, the new buildings comprise a production hall, a test and demonstration hall, and new office and social areas.



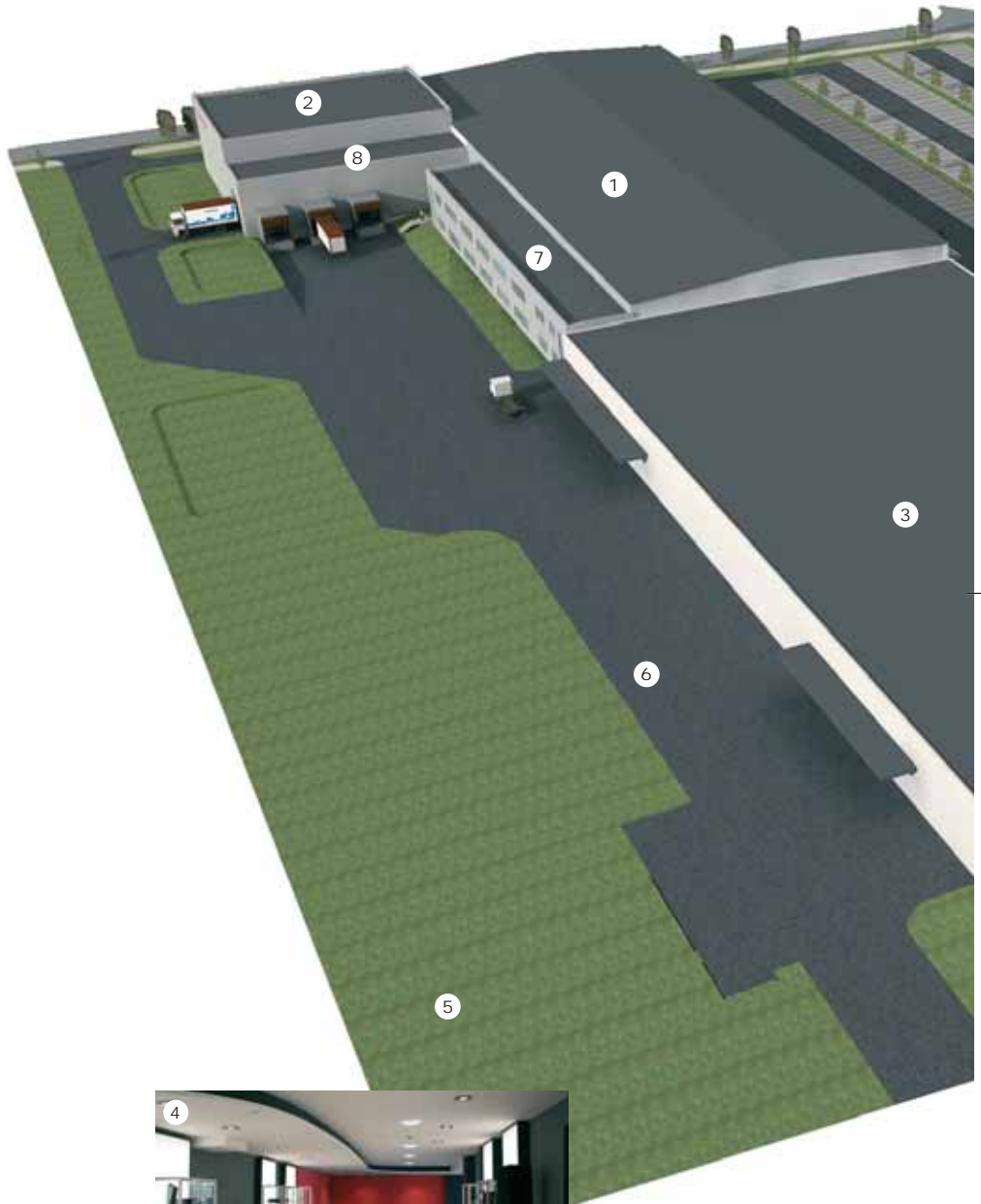
**1 New building, new production hall**  
The new production hall – the six U-cells (above) and the clear layout of the workstations (below) are conducive to increased productivity, efficiency and flexibility



**2 Test and demo hall**  
The test and demo hall – optimal acoustics for conducting tests under realistic concert conditions



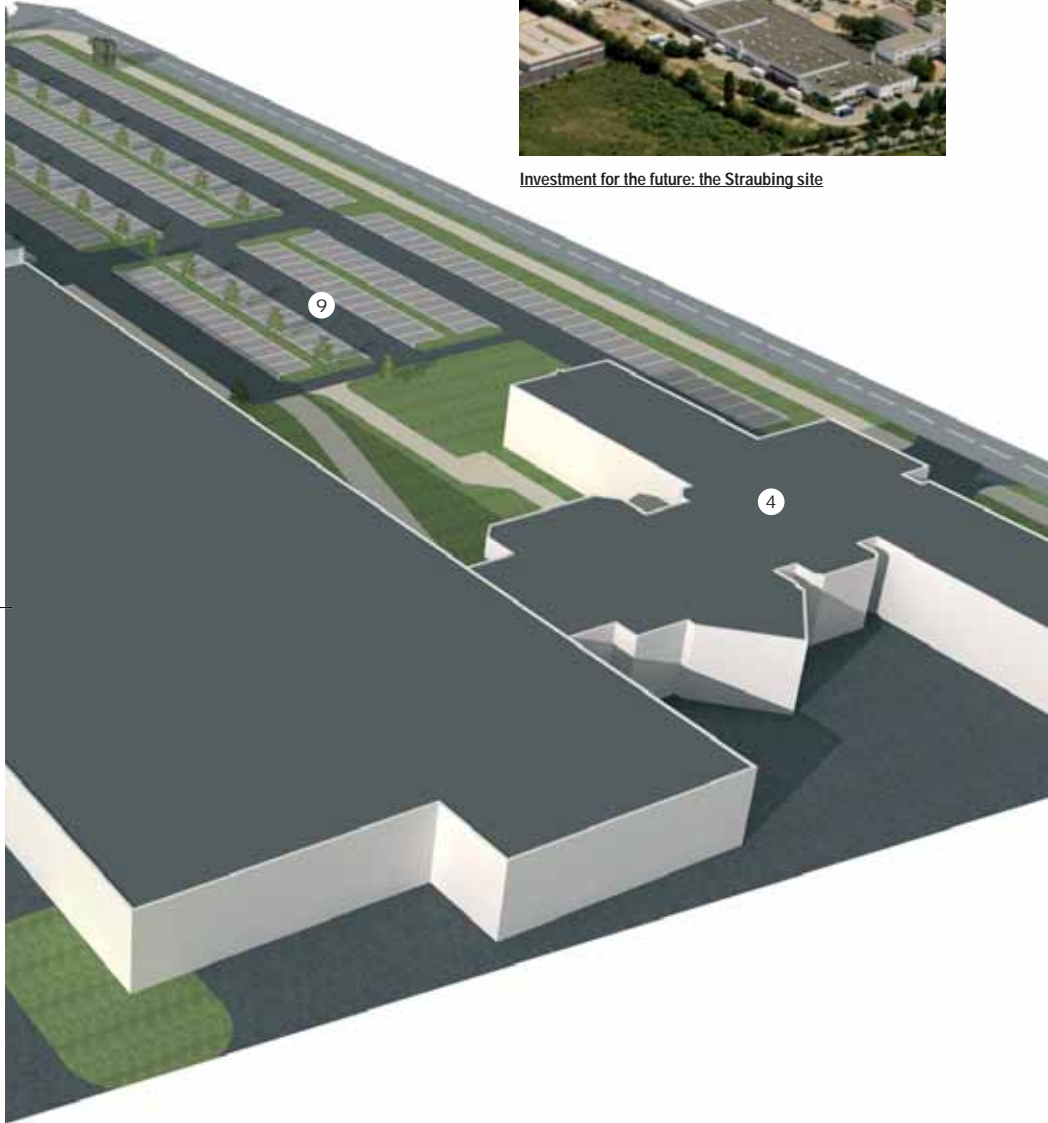
**4 Administration block with entrance/ foyer**  
The foyer – the classic products in the glass display cases reflect DYNACORD and EV's rich tradition as an innovator and show a selection of products from the current ranges of all brands



## INSIDE



Investment for the future: the Straubing site



## EXPLANATION

- 1 New production hall
- 2 Test and demo hall
- 3 Former production hall, now new warehouse
- 4 Administration block with entrance/foyer
- 5 EVI Audio premises
- 6 External test pad for enclosures
- 7 Main offices and meeting rooms
- 8 Goods entrance and exit
- 9 Parking

**THE STRAUBING SITE**

- 491 employees  
(including 31 trainees)
- 39,300 sq. m. of grounds

**THE NEW PRODUCTION HALL**

- Completed in September 2007 after around eight months of construction
- 4,000 sq. m. production area
- 2,000 sq. m. additional space for offices and social rooms, a new test and demonstration hall, additional parking spaces as well as a new goods delivery and dispatch area
- new production concept using the latest technology & Bosch Production System (BPS)
- total investment c. 8 million euros

**THE NEW TEST AND DEMONSTRATION HALL**

- the largest test and auditioning room for professional speaker systems in Europe
- measurements and demos of loudspeakers and speaker systems under realistic conditions
- granite floor for 'reflection source measurement procedure'
- reverberation time < 1s

FACTS

## INTERVIEW WITH KONRAD PROYER AND THOMAS KROLL

**"A WELCOME INDICATION THAT THE FUTURE IS SECURE"**

In September, the new construction work at the Straubing works was largely concluded. Extending over 6,000 square meters, the new buildings comprise a production hall, a test and demonstration hall, and new office and social areas. In an interview with newsflash, Works Manager Konrad Proyer and Production Manager Thomas Kroll provide details



Convinced of the advantages of the new production hall: Works Manager Konrad Proyer (l.) and Production Manager Thomas Kroll

**newsflash:** *It was originally planned to use the new hall in Straubing as a warehouse; it turns out to be a production hall satisfying the highest modern standards. How did this change of plan come about?*

**Konrad Proyer:** With the acquisition by Bosch Security Systems, we fundamentally altered the original concept. Today the new building serves as a production hall, whilst the old production hall is used mainly as a storage area for parts.

The additionally constructed test and demonstration hall satisfies the long-cherished wishes of our development and sales departments: we now have the largest test and auditioning room for professional loudspeaker systems in all Europe at our disposition. When used for demonstrations, we can present our products to customers there under optimal conditions.

At the same time, the new facilities confirm the commitment of the enterprise to research and development, as well as to the pillars of the company philosophy: high quality, stability, and long-term growth.

In all, the new buildings represent an investment of some eight million euros (USD 11.5 million)

**Thomas Kroll:** The objective of the new concept is to enable us to work more productively and efficiently. In the course of the rebuilding, we have reconfigured the production lines in the factory

in accordance with a pull system, which makes for greater productivity and shorter throughput times.

**Konrad Proyer:** Unlike the previous line production, now we have six U-shaped cells, divided according to product family. With this new production and logistical concept for our end products, we can react considerably faster and more flexibly to the requirements of customers.

**newsflash:** *It must have meant a major readjustment for the employees...*

**Konrad Proyer:** That is true. Many of our employees had a completely new workflow and new tasks to get used to, so their first order of business was to adapt to the new environment.

**Thomas Kroll:** Before, we had a strict separation between assembly and quality control. They were in separate halls and the production lines were divided by a buffer into two completely separate areas. Today, we have production teams that work in concert.

**Konrad Proyer:** Each of the six U-shaped cells works on the 'one piece flow' principle. That means assembly and quality control processes are sequence decompressed or 'taktet', i.e. adjusted to one another and chained so that the product 'flows' to the dispatch department.

**Thomas Kroll:** And the workstations are arranged in a very ergonomic fashion: the employees, in each of their 'spheres of effectiveness', have everything they need for their work within easy reach: large parts, small parts, shipping containers, tools...

**newsflash:** *How has the workforce coped with the changes?*

**Konrad Proyer:** All change necessarily involves an initial period of uncertainty. For this reason, it is important to take time with people, to make sure they know what is going on and understand the underlying rationale. We did this, and the degree of acceptance within the workforce grew from day to day.

When the employees returned from their holidays and resumed work in their new workplaces, it was a great challenge for us all; a challenge that we very quickly met. Nonetheless, all the

members of our team—master craftsmen, gang leaders, planners, skilled workers, mechanics, and trainees—who had played a large part in developing, planning, and implementing the lines had to work flat-out in the initial stages, to get back up to speed in the shortest possible time.

**newsflash:** *What are the advantages of the new hall?*

**Konrad Proyer:** The new hall is fully air-conditioned: the temperature is a steady 24 degrees. In the old hall, it was not unusual for the temperature to reach 30 degrees in the summer, which was a pretty uncomfortable temperature for working. Furthermore, the new hall is brighter and friendlier. We've installed social rooms and a kitchen for the staff, and we want to put in changing rooms, a doctor's surgery, and a first aid room.

Directly adjacent to the hall, we have located offices and meeting rooms for departments and functions directly relevant to production, cutting down unnecessary walking.

**newsflash:** *Do the new halls mark the end of construction and renovation work at the Straubing works?*

**Konrad Proyer:** The building work is largely over but we will need a few weeks and months to fully realize our production concept. For example, our planned warehousing and material supply concept has not yet been fully realized.

We are planning in parallel to move Bosch Security Systems' Ottobrunn works here by May 2008. In other words, from May 2008 onwards we will no longer be purely an audio factory: we will also be producing for the Video Equipment and Burglar/Fire Alarm divisions.

This, too, is a welcome indication that the future of the Straubing works is secure.

## I N S I D E

## THE NEW TEST HALL AT EVI AUDIO

**NUMBER ONE IN EUROPE**

Adjacent to the new production hall in Straubing, there is a second hall for the purposes of measurement, testing, and demonstration. Representing the cutting edge in acoustic architecture, the c. 600 square meter hall is of unrivalled excellence



Over 600-square-meter playground: the new measuring, test and demo hall in Straubing

Annexed to the new production facility and extending over 600 square meters, EVI Audio's new measurement, test, and demo hall is over ten meters high, with a floor of stylish gray granite, and walls and ceiling clad with sound-absorbent

material tailored to the exact dimensions of the room. In short, the acoustic conditions are perfect.

As Günter Krauss, who oversaw the development of the hall, explained to newsflash: "To have

a hall of your own in which to conduct tests and demos under real concert conditions is the dream of every developer." In the past, you had to rent one, which was inconvenient and cost-intensive; what's more, the facilities obtained often left much to be desired. "Now," says Krauss, "systems can be tested and adjusted under the same conditions encountered in live performance, all in a more systematic way and far more quickly." What's more, the acoustic conditions are reproducible and correspond to those of a modern cinema: the walls and ceiling are sound-absorbent to a large extent, whilst the granite floor serves as an acoustic mirror, making it possible to conduct mirror sound source measurements. The reverberation time of the hall in the frequency range 50 Hz - 20 kHz is less than a second.

The soundness of the investment became apparent within a few days of the hall's commissioning, with the work of testing and measuring new systems in full swing. But the hall is by no means reserved exclusively for internal use, as Krauss was at pains to point out: "It's also available to our customers, to whom we can now demonstrate complete systems. Unlike before, customers now also have the possibility of obtaining hands-on experience of the equipment and trying out different set-ups for themselves." The demand, Krauss affirms, is already considerable. But is it any wonder? A facility like this for testing and demonstrating sound reinforcement equipment is raising the bar to an all-time high, setting new standards in the pro audio sector. "As far as we know," says Krauss, "there is nothing quite like it in all Europe."

**WHAT THE STAFF HAVE TO SAY....**

**Daniel Blaum (Skilled worker specializing in testing equipment):** The production process is far better ordered than before, and the production flow considerably better. Naturally, for those of us who work here, the changes weren't all that easy to assimilate at first, but in the end things have turned out very well. Everything's been modernized, and the atmosphere in the hall is now much more positive. What helps, I think, is that working here is fun, and when you enjoy your work, everything is just that bit easier.



**Renate Neumeier (Quality control for finished products):** The new hall is fully air-conditioned and super for us, the employees, to work in. It's now much brighter, neater, and cleaner. In every production line, there is now a repairman ready to step in as soon as any problems arise. Everything is more direct and compact. The members of the new teams will all have to get better acquainted with one another, but I find the system works very well. It took a bit of getting used to, but I think it was worth it.

## HIGHLIGHTS: Electro-Voice

ANDREA BOCELLI IN LAJATICO

## TOP CLASS GALA WITH ANDREA BOCELLI AND EV

Italian singer Andrea Bocelli hosted a gala of superlative quality in his home town of Lajatico on July 5th, during which, with assistance from top international stars including David Foster, Kenny G. and Lang Lang, he treated the 5,000-strong audience to highlights from his stellar career. Milano Music Service (M.M.S.) was responsible for the production, relying on systems from Electro-Voice



Exclusive location with EV systems and superstar Andrea Bocelli (r.): the open-air stage of the Teatro Del Silenzio in Lajatico (Italy)

The level of worldwide interest in the event—as well as the size of the audience—made it imperative for organizers Four One Music agency of Vittorio Quattrone und Maddalena Tronchetti Provera and Milano Music Service to provide a reliable system to deliver first class sound, come what may. The technical organization and coordination of the lighting and audio systems by Giovanni Colucci of M.M.S. and Pierfranco Galeone of EV's Italian partner Texim. In order to present the event, in which the open-air stage blended tastefully into the natural backdrop, in the best possible light (acoustically speaking) they opted for systems from Electro-Voice. With Pierfranco Galeone providing expert support, exhaustive simulations were conducted using EV's EASE software, accounting for both the size of the stage and the area to be covered, along with a wide variety of potential wind and weather conditions. Based on these simulations,

M.M.S. opted for the following setup:

**Main System:**

24 x EV XLC 127+  
12 x EV X-Sub  
6 x EV 24 x EV P3000  
4 x EV 8 x EV P3000

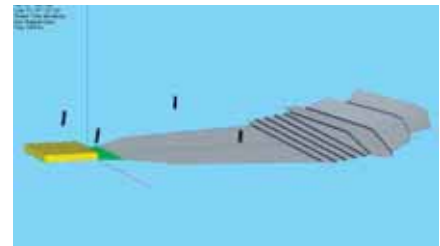
**Delay:**

20 x EV XLC 127+  
8 x EV X-Sub  
6 x EV 24 x EV P3000  
2 x EV 4 x EV P3000

**Frontfill:**

2 x EV EV P3000  
1 x Rack Master  
7 x KT DN9848  
1 x KT DN6000

## AN EXQUISITE AND UNIQUE VENUE



Guarantor of A1 sound: an EASE simulation

The Teatro del Silenzio in the small town of Lajatico, near Pisa, is one of the most exquisite concert venues in Italy. Dominated by an impressive sculpture by Arnaldo Pomodoro, the 5,000-seat theatre blends tastefully into the Tuscan landscape without a block of concrete in sight. Not only was Bocelli the first artist to perform in the new theatre when it opened in the summer of 2006, he is also its honorary chairman. Though the number of performances in the Teatro del Silenzio is limited to one per year, one thing is sure: whatever the program, this single event is surely destined to the European concert calendar.

The soundness of this specification was underlined by (among others) a critic from the magazine Sound & Lite, who wrote: "I can certainly say that this event impressed me like no other. The perfect technical installation contributed to the magic of the evening."



## HIGHLIGHTS: Electro-Voice

SHOW HIRE, MILFORD

**BETTING ON A WINNER**

Milford, UK-based rental company Show Hire recently invested in equipment from Electro-Voice. The new systems were deployed for the first time at the renowned Burghley Horse Trials in Stamford



Clearing every acoustic hurdle with ease: ZX1i-100T loudspeakers at the Burghley Horse Trials

The Burghley Horse Trials in the English county of Lincolnshire are among the most important events in the international equestrian calendar. Over 120,000 spectators followed this year's competition, which extended over four days at the beginning of September and included such disciplines as dressage, show jumping and cross-country. As the competition unfolded, the sound system had a particularly important role to play in keeping spectators informed of the latest developments. To satisfy the very high expectations of the organizers, spectators, and competitors, Show Hire, the company responsible for the sound, invested in Electro-Voice systems provided by EV partner Shuttlesound. These included EV ZX1i-100T speakers and EV PA2400T amplifiers.

The Burghley Horse Trails posed a challenge this year, not only to riders and horses but also to the team from Show Hire and the equipment they chose to deploy. Because the installation was temporary, it was not possible to embed the loudspeaker masts in concrete, and the 7 km of cable had to be buried and dug out again at the end of the event. The stipulation was that Burghley Park should look as elegantly British after the event as it had done before. Commented

Show Hire's Nick Chubb: "We have become somewhat expert in the area of outdoor productions. We know exactly what types of adversity the equipment will be exposed to: it not only has to be robust but also capable of withstanding the effects of rain, wind, and sun." Hence the choice of ZX speakers from Electro-Voice. "They can handle the British weather and deliver top performance. The reproduction in the low frequency range is consistently excellent, and provided here a solid foundation for the numerous musical interludes between the competitions."

With the addition of the Electro-Voice systems to its arsenal, the outdoor specialist is seeking to improve its position in the rental market: "We are able now to provide our customers with noticeably improved sound quality and amplification," says Chubb, "and ready to realise our potential for larger events. The ZX1i-100T speakers and PA2400T amplifiers will open new doors for us."



"Audible improvements":  
Nick Chubb of Show Hire

HIGHLIGHTS: Electro-Voice

SNOWMOBILE AND ATV TOURS IN THE STATES

# WEATHERPROOF PERFORMANCE



A huge attraction not only in the USA: action-packed snowmobile racing (l.) with weatherproof Sx600 PI loudspeakers from EV (r.)

**Making live sound reinforcement happen on the World Power Sports Association Racing Sno-X snowmobile and ATV tours requires some seriously tough loudspeakers. Enter the Electro-Voice Sx600PI...**

Supercharged snowmobile engines issue high pitched screams at 130 dB, pushed to piston-pummeling extremes as they tear around the track, heavily modified 600cc machines running race fuel... It's LOUD. The crowd is nearly as noisy, loving every minute of it. Being heard above all this is easier said than done. And then there's the mud, the slush, the dirt...

That's why Rob Powers and Faron Meeks of PowerSports Entertainment (Exec. Producer and Managing Director of Sound & Talk, respectively) rely upon weatherproof Sx600PI dual element line array speakers from EV to cut through the

massive din at these grueling events. Whether in a portable application or a permanent installation, the Sx600 is one sonic powerhouse that won't stop working, whatever the weather.

As well as providing high quality broadcast audio at the studio end of things, Meeks explained how the PowerSports Tour Team use Sx600s to reliably deliver loud and clear sound for the live audience—a critical element of the complete race experience. "We travel around the USA on tour, pretty much non-stop," says Meeks. "This world is loud and dirty. And each venue we visit is unique, with a different layout. The Sx600s are custom-mounted in eight-foot tall aluminum frames; these allow them to be precisely moved into position to address the seating areas from the race tracks, all while protecting them from the inevitable physical abuse they encounter, being so close to the action. The Sx600's charac-

teristic long throw makes them ideal to reach the uppermost seats in the largest bleacher blocks. There can be over 40,000 people in one of these sections—take Lambeau Field in Green Bay, for example. We put eight of these speakers in front of the east side, spaced them out over the entire 120+ yards. The fans had never heard such a high level of intelligibility in the stadium before; it was perfect all the way up to the top."

"The speakers have seen over 1500 hours of use at over 36 events—around 160 days of solid use—and have held up above and beyond anybody's expectations," Powers adds. "They've been buried in snow, caked with mud, run at -30 F in the winter and 105 F during the summer. It's a testimony to EV quality that these boxes are still going strong despite being road worn in our semis and covered with mud and snow day after day."



"They convince with their power and projection": Faron Meeks on the EV Sx600PI loudspeakers

## EV SX600 POWER AND PERFORMANCE FOR HIGH SCHOOL FOOTBALL



The football field at San Jacinto High: "First-class sound performance" with the Sx600

Different conditions, same solution. Designed by Thompson Engineering of Riverside, California, a new Electro-Voice Sx600 dual element line array loudspeaker installation is making a sonic impact at San Jacinto High School football field. "The school was looking for something extra in their new sound system," says Joe Lira, Vice President - Operations, Thompson Engineering. "Having had the harsh sound of horns for so long, they asked us for a speaker that combined concert-quality audio, weatherproof durability and

value." Designed to deliver high output and intelligibility in indoor/outdoor applications such as stadium installations, four EV Sx600s now cover the home side bleachers and field at San Jacinto High School, and two more cover the visitor bleachers. "The Sx systems have opened up the possibilities for this space," says Jeff Tappenden, Audio Systems Specialist, Thompson Engineering, who worked on the system design, "as it can now be used for graduation and concert events, not just football games. After running EASE models of the venue and looking at its feature set to price ratio, the Sx600 from EV stood out as the clear solution—it's a speaker designed for this job."















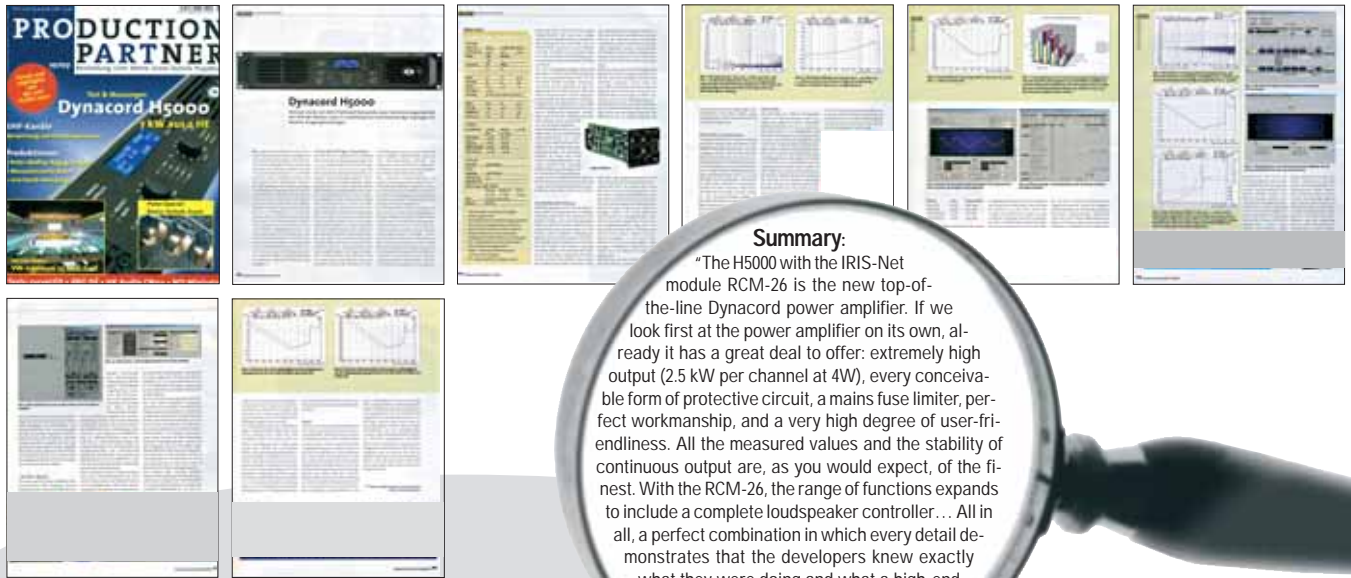




DYNACORD SYSTEMS IN THE MEDIA

# TESTED AND FOUND TO BE "EXCELLENT"

Once again in 2007, leading specialist magazines put DYNACORD's latest products under the magnifying glass. Here's a small selection; download the entire articles in PDF format by following the links beside each



**Summary:**  
 "The H5000 with the IRIS-Net module RCM-26 is the new top-of-the-line Dynacord power amplifier. If we look first at the power amplifier on its own, already it has a great deal to offer: extremely high output (2.5 kW per channel at 4W), every conceivable form of protective circuit, a mains fuse limiter, perfect workmanship, and a very high degree of user-friendliness. All the measured values and the stability of continuous output are, as you would expect, of the finest. With the RCM-26, the range of functions expands to include a complete loudspeaker controller... All in all, a perfect combination in which every detail demonstrates that the developers knew exactly what they were doing and what a high-end power amplifier for the professional touring and installation market needs..."

**PRODUCTION PARTNER**  
 DYNACORD H5000 in „Production Partner“ 10/07

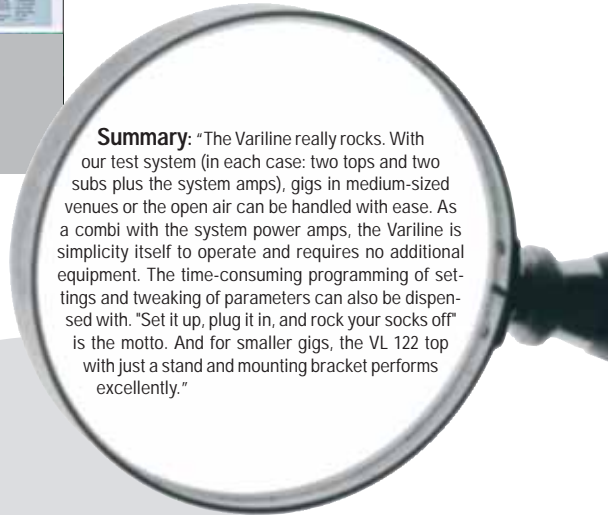
to read the entire article:  
[www.dynacord.com](http://www.dynacord.com)  
 for more information: [www2.production-partner.de](http://www2.production-partner.de)



**Summary:** "The small D-Lite D8 with the matching SUB 112 is a big all-rounder with a small footprint and light weight. Its balanced sonic image makes it very flexible in use. Its exceptionally high manufacturing quality and power handling guarantee users lasting satisfaction and ensure that (in all probability) they'll need only dip once into their purses."

**SOUNDCHECK**  
 DYNACORD D8 & SUB 112 in „Soundcheck“ 01/08

to read the entire article:  
[www.dynacord.com](http://www.dynacord.com)  
 for more information: [www.soundcheck.de](http://www.soundcheck.de)

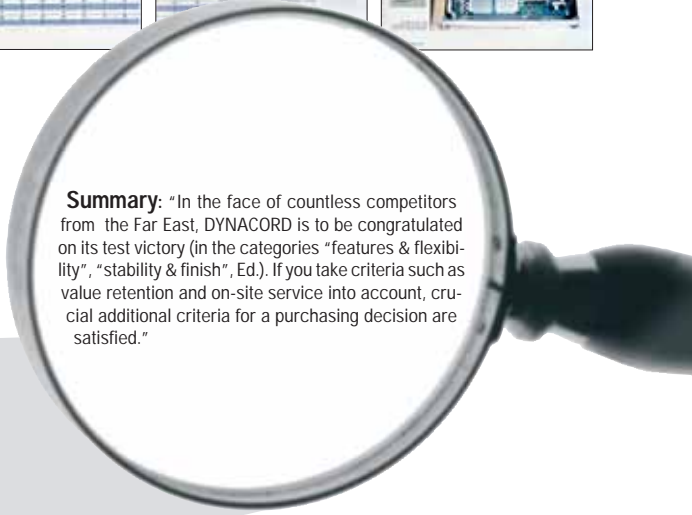


**Summary:** "The Variline really rocks. With our test system (in each case: two tops and two subs plus the system amps), gigs in medium-sized venues or the open air can be handled with ease. As a combi with the system power amps, the Variline is simplicity itself to operate and requires no additional equipment. The time-consuming programming of settings and tweaking of parameters can also be dispensed with. "Set it up, plug it in, and rock your socks off" is the motto. And for smaller gigs, the VL 122 top with just a stand and mounting bracket performs excellently."

**SOUNDCHECK**

DYNACORD VL 122 Sub 18 & Xa 4000 in „Soundcheck“ 07/07

to read the entire article:  
[www.dynacord.com](http://www.dynacord.com)  
 for more information: [www.soundcheck.de](http://www.soundcheck.de)



**Summary:** "In the face of countless competitors from the Far East, DYNACORD is to be congratulated on its test victory (in the categories "features & flexibility", "stability & finish", Ed.) If you take criteria such as value retention and on-site service into account, crucial additional criteria for a purchasing decision are satisfied."



**TOOLS4MUSIC**

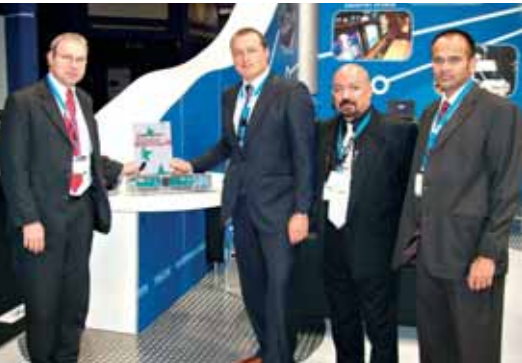
DYNACORD CL-1600 – comparative test winner – tools4music 02/07

tools4music tested five PA power amplifiers from different manufacturers. The DYNACORD CL-1600 emerged as the winner.

to read the entire article:  
[www.dynacord.com](http://www.dynacord.com)  
 for more information: [www.tools4music.de](http://www.tools4music.de)

## TELEX/RTS AT THE IBC 2007 STAR AWARD FOR THE KP-32CLD KEY- PANEL

At the IBC 2007, broadcasting magazine "TV Technology Europe" once again presented its STAR awards, which are among the most covered in the broadcasting sector. Among the prize-winners was the KP-32CLD keypanel from RTS. Naturally, the TELEX/RTS IBC team was delighted. "This award confirms that we're on the right track," said Nico Lewis, Director Sales CCS EMEA at TELEX/RTS. "With its new functionality and innovative design, the KP-32CLD not only satisfies all the fundamental requirements of a keypanel but also offers numerous features that add up to precise control. An advantage the customers greatly appreciate, as do industry specialists—hence the award."



Gratified by the STAR award: RTS-Product Manager Christian Latzelsberger, Nico Lewis, Director Sales CCS EMEA of RTS, Talal Aly-Youssef, VP Engineering of RTS and Kiran Govindarajan, Senior Engineering of RTS

## VATECH VIDEO & AUDIO NEW TELEX DISTRIBUTOR IN THE LEBANON

Broadcast expert Fadi Serhan and his Beirut-based firm Vatech Video & Audio have been distributing TELEX/RTS intercom systems in the Lebanon since October 2007. The company, which recently opened a new showroom in the center of Beirut, maintains excellent contacts with all the large Lebanese broadcasting concerns. In all, Vatech boasts a staff of seven to handle sales, logistics, engineering and support.

**Contact details Vatech Video & Audio:**  
Fadi Serhan  
Phone: +961 1310607  
Fax: +961 1318371  
E-mail: fadi@vatech.com.lb



Facing a bright future together in the Lebanon: Fadi Serhan (l.) of Vatech Video & Audio and Nico Lewis (r.), Director Sales CCS EMEA at RTS in America

## STEPHEN RODWAY STRENGTHENS TELEX/RTS NEW SALES ENGINEER FOR EASTERN EUROPE

With the recruitment of Stephen Rodway, TELEX/RTS has gained a specialist with vast experience and expertise in the areas of broadcast, intercom and telecommunications. A graduate of Cambridge College of Arts & Technology, Rodway assumed responsibility for Eastern Europe and the rapidly growing Russian market at the end of November 2007.

**Contact details Stephen Rodway:**  
E-mail: stephen.rodway@de.bosch.com  
Phone: +44 5511 490150  
Fax: +44 5511 490151  
Cellphone: +44 7879 814945



Fortified for new endeavors: the TELEX/RTS team for Eastern Europe, comprising (from left to right) Adrian Richmond (Sales Engineer CCS UK), Nico Lewis (Director Sales CCS EMEA), Stephen Rodway (Sales Engineer CCS), and Geoff Rogers (RTS Systems Engineer CCS E.A.M.E.)

## 40 YEARS OF NEWSFLASH

OK, so 40 years ago it wasn't called newsflash but "Dynacord news", it had a somewhat Spartan look with black-and-white photos, and it was as thin as the user manual of a coffee machine. But even back then, the magazine was chock full of great names. On the front cover, they had Tom Jones bellowing "Delilah" through the legendary DYNACORD S100, whilst the back page showed a frizzy-haired singer attending a product test: hippy legend Donovan!



INSIDE

## ELECTRO-VOICE SWITZERLAND MS PRODUCTIONS INVESTS IN EV XLC/XLD

Swiss rental company MS Productions recently expanded its inventory to include an extensive new line array system from Electro-Voice, acquired through EV's Swiss partner Audiotech. After extensive tests, the team led by MD Luc Chassot opted for twelve EV XLD 281 array elements, four EV XLC 215 array elements, and eight EV XI1191 subwoofers, for reasons he outlined as follows: "What convinced us above all was their outstanding sound quality; that was the most powerful argument. The fact that the system is also ultra-compact and enormously versatile into the bargain only made the choice easier."



Sound Designer Pierre-Alain Vannaz (l.), FoH-Engineer Julien Mayor (c.) and Managing Director Luc Chassot (r.) of MS Productions groove with EV

## NEW SALES MANAGER IN AMERICA GARY PACE JOINS DYNACORD TEAM

With pro audio specialist Gary Pace onboard in the role of National Sales Manager, DYNACORD has strengthened its commitment to North, Central and South America. Gary Pace brings over 25 years of experience in the entertainment equipment sector to his new post, as well as a solid background in global sales and brand management.

### Contact details Gary Pace:

E-mail: gary.pace@us.bosch.com



Relishing his new responsibilities: Gary Pace, DYNACORD's National Sales Manager for North, Central and South America

## WFX WORSHIP FACILITIES EXPO- WESTOVER CHURCH WINS BY DESIGN

At the WFX Worship Facilities Expo in October 2007, the Solomon Award for "Best Design, Implementation and Operation: Audio Equipment/System" in the U.S. was won by Westover Church in Greensboro, North Carolina. In addition to a Midas XL8, Klark Teknik equipment, TELEX/RTS intercom, and Bosch security systems, this 3,000-seat house of worship boasts the largest EV NetMax/IRIS-Net software configuration to be found anywhere in the US, with no fewer than 204 EV loudspeakers. Congratulations!



## HOT STUFF — BESTSELLERS FROM OUR MERCHANDISING KIOSK

### Warmly dressed...

...but looking cool! Our snug fleece jackets—available with DYNACORD or Electro-Voice logos—leave no one out in the cold. Their commodious, casual cut and soft, fleecy texture make them the perfect antidote to wind and rough weather, offering light, breathable comfort all year round. With a zipper and two outside pockets. Price: 49 euros each.



back

Fleece Jacket

back

DYNACORD  
Fleece Jacket

Electro-Voice  
Fleece Jacket

M : D153237  
L : D153238  
XL : D153239  
XXL: D153240

M : D153241  
L : D153242  
XL : D153243  
XXL: D153244

# POLE POSITION!!



## D-LITE<sup>®</sup> SERIES

**German Engineering Excellence.** Power impresses most where least expected, going by appearances. Motto: small but wow!

The latest lightweights in the D-Lite series are such diminutive power giants that (once again) they set new benchmarks: the D8 full-range 2-way box (8" + 1") weighs less than 9kg but offers up to 10 dB more peak SPL than other products in its class. Roughly double the range and four times the audience then!

To go with it, and also in miniature format, the SUB 112 twelve-inch subwoofer, which at only 20kg and with peak power handling of 1600W provides an impressive bass foundation right down to 43Hz and is easily operated parallel to a full-range box (e.g. the D8).

Check 'em out! From authorized DYNACORD dealers, today!



# DYNACORD<sup>®</sup>